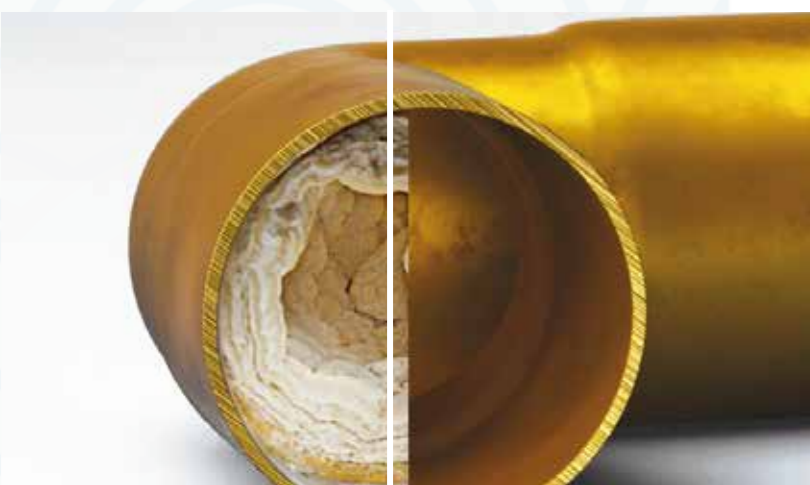




Lime damage to your home

Lime can cause invisible damage to your home. Damage that you can see and some that goes unnoticed. If you live in an area with high water hardness, all of these issues may be familiar to you:



Protected and shiny toilets and taps like the first day. Protect your installation and prevent your pipes from clogging with lime. Thus increasing the consumption of energy to heat the water.

Glassware and tableware protected from lime, save money on anti-lime chemicals.



Your clothes softer and with more vivid colors for longer.



Advantages and savings of water softeners

Limestone is a losing battle. It's a daily annoyance that you can erase, but it always comes back. Imagine that you could still have perfectly soft water which, instead of making your life miserable, would help you care for and protect your home ...



Your household appliances such as washing machines, radiators, dishwashers, etc. they will last longer and consume less anti-scale products.

Why soft water in my home?



Soap and detergents do not work properly in hard water. To get a good lather you need to use much more of it, which is not only expensive, but its effects can easily be seen and felt. Soft water creates a rich, creamy lather with less soap or detergent and rinses off very easily.

The soft water produced by **TOREN** water softeners will provide you with multiple advantages. Save on maintenance of household appliances such as dishwashers and washing machines. Your crockery and glassware will be shinier, your clothes softer and with brighter colours for longer.



TAKE CARE OF YOUR CLOTHING

New clothes for longer

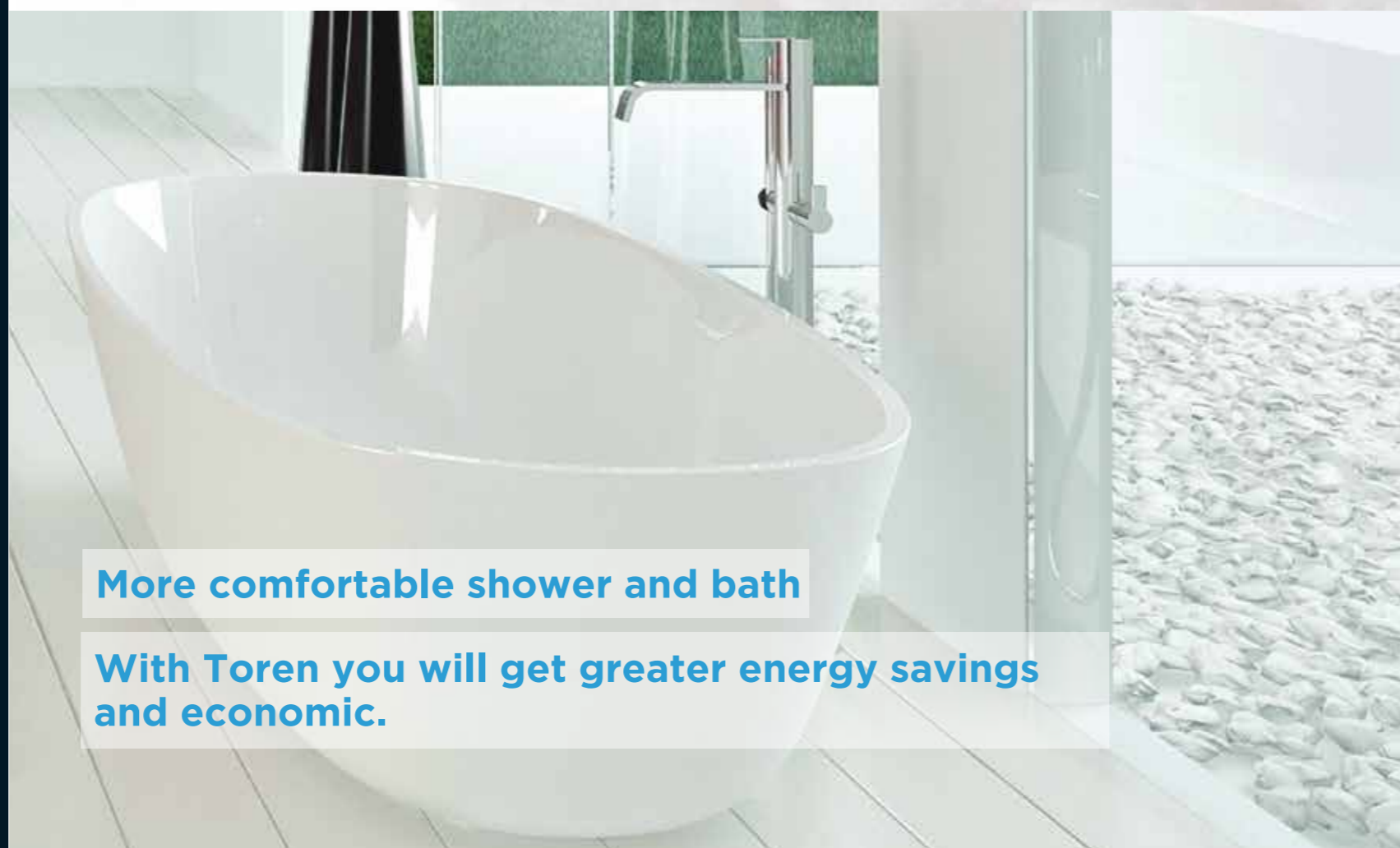
If the water in your home is hard, you need to use more detergent to clean effectively. Your washing machine can't rinse everything, so it stays on your clothes, making them stiff and rough.



SOFT SKIN AND HAIR

Gentle water with your skin and hair

Using more soap and shampoo to lather may be harmful to your skin and hair. Soap residue can irritate the skin, making it itchy, scaly, and dry.



More comfortable shower and bath

With Toren you will get greater energy savings and economic.





TÖREN

The **TÖREN** softener has the highest technology which facilitates its installation and maximizes its reliability. The Toren valve, made of Noryl, is fully hydraulic, works without electricity.

The **DIRECT ACCES** system makes programming easier and guarantees correct start-up. Toren incorporates the revolutionary **SAVING REGEN** system. The most modern descaling technology applied at TÖREN.

TÖREN water softeners respect space and are capable of rapid regeneration thanks to their **SPEED REGEN** system. In addition, the **TÖREN HIGH FLOW** broadband system prepares equipment to 100% meet the needs of homes and commercial facilities

“Designed according to the demands of installers and professionals in the water treatment sector”

“Designed for domestic and commercial applications”

Fresh water in our bathroom is one of the big differences. Showering and bathing in softened water are more comfortable: children will enjoy a real bubble bath, their hair will be silky and easier to comb, shaving with soft water will stop being irritating and your skin will be softer. 'will improve in appearance and hydration.

Serial bypass: The bypass ensures that the user can choose the water according to his needs. It also incorporates a hardness mixer.

Easy access tank: The accessibility of the salt tank allows the use of salt blocks or tablets in the same equipment.

Easy Access Cover Design: Toren equipment is designed for easy installation and maintenance to minimize costs.



TÖREN

NON ELECTRIC WATER SOFTENER
HIGH FLOW · LOW CONSUMPTION

Toren recommends
Kinetico
water systems
PREFILTER SERIES

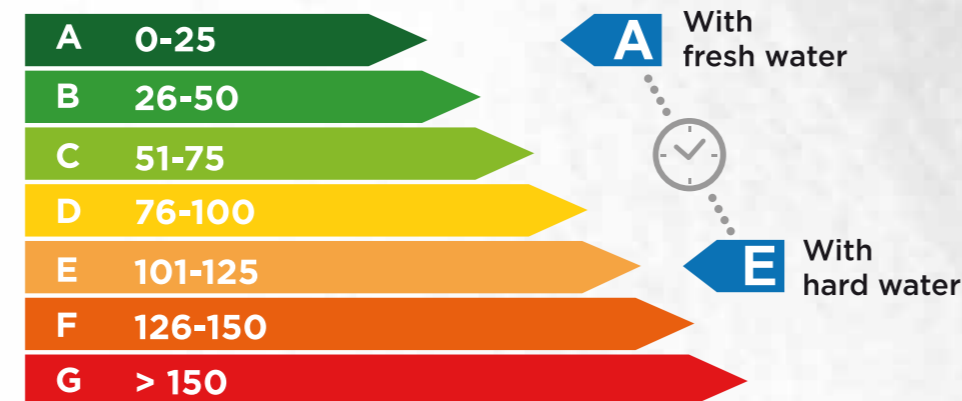


Ultra Compact
Versatile
Easy access



AVOID COSTLY REPAIRS AND LOSS OF ENERGY EFFICIENCY

More energy efficiency



Less energy efficiency



KEEP THE INITIAL ENERGY EFFICIENCY OF YOUR BOILER OR HOT WATER SYSTEM.

Why Toren?

The **TÖREN** softener combines maximum performance and eco-efficiency in a compact design that delivers the ultimate in freshwater.



Benefits of fresh water for your home

Limestone is a losing battle. It's a daily annoyance that you can erase, but it always comes back. Imagine that you could still have perfectly soft water which, instead of making your life miserable, would help you care for and protect your home ...



SAVE MONEY

Spend less time cleaning

A house with fresh water is a house without limestone. Just think about how much time you will save by stopping the cleaning and how proud you will be in seeing your house sparkling.



PROTECT YOU HOME

Protect and extend the life of your devices

Any device that uses soft water will not be hard at all and will work more efficiently with soft water.



EASY TO INSTALL



Salt block for easy loading

Speed Regen technology guarantees a continuous flow of fresh water 24 hours a day

Characteristics

The **TÖREN** range of water softeners has two **TÖREN** 8 and 11 models depending on their flow capacity and hardness retention. Your dealer will conduct a technical study to determine which equipment is best suited to your needs.

Model	Toren 8
Code	903075
Resin volume	8 liters
Working flow	1,8 m ³ /h
Maximum flow	2,1 m ³ /h
Exchange capacity	17,6° HFxm ³
Salt/regeneration	0,36 Kg Salt
Maximum hardness	60° HF
Water consumption/reg.	25
Duration of the regeneration	15 min
Room temperature	4-40°
Temperature range	1,7 - 45°C
Pressure range	1,7 - 8 bar

Capacities and salt consumption per regeneration:

15°HF	20°HF	25°HF	30°HF	35°HF	40°HF	0°HF	60°HF
914	685	548	457	392	343	274	228

Model	Toren 11
Code	903076
Resin volume	11 liters
Working flow	2,1 m ³ /h
Maximum flow	2,1 m ³ /h
Exchange capacity	23,7° HFxm ³
Salt/regeneration	0,36 Kg Salt
Maximum hardness	73° HF
Water consumption/reg.	25
Duration of the regeneration	15 min
Room temperature	4-40°
Temperature range	1,7 - 45°C
Pressure range	1,7 - 8 bar

Capacities and salt consumption per regeneration:

15°HF	20°HF	25°HF	30°HF	40°HF	50°HF	60°HF	70°HF
1250	938	750	625	469	375	313	268



Non-electric water softener



Low salt consumption



Uses less water



Provides for the needs of a household



Regeneration within 15 minutes

