

columbia.
aqua

FC-550

MU















**Technical Manual
Service Booklet**

MU

INDEX

1. PRINCIPAL CHARACTERISTICS	4
2. UNPACKING	5
3. INTRODUCTION	5
4. THE TYPES OF TREATMENT USED BY KINETICO 550	5
5. PRIOR WARNINGS	5
6. OPERATION OF THE EQUIPMENT	6
7. HOW TO ACCESS THE FILTERS	10
8. TECHNICAL CHARACTERISTICS	12
9. INSTALLATION	13
10. CLEANING AND MAINTENANCE	14
11. SANITIZATION PROCEDURE	14
12. TROUBLESHOOTING	16
13. WARRANTY	18
14. INSTALLATION REGISTER SHEET	19
15. MAINTENANCE SERVICE	20
16. NOTES	22

1. PRINCIPAL CHARACTERISTICS

	DIRECT ACCESS Ease of access and maintenance.
	BAYONET FILTERS Equipped with bayonet filters with quick connection.
	ENERGY SAVING Equipped with energy-saving technology
	CLICK Quick and highly secure connections
	FILTER Equipment with filtration system
	ULTRAFILTRATION Equipment with ultrafiltration system
	COLD Cold water production
	VENTILATION SYSTEM Forced ventilation system for the outdoors, large loads and very warm regions
	CHILDREN SAFE Security System for Hot Water
	ROOM TEMPERATURE Production of Room Temperature Water
	HOT Hot water production
	LED Illuminated information system
	ANTIBACTERIAL Self-sterilizing bozzle with UV LED lamp
	DOSAGE Extract pre-programmed quantities

2. UNPACKING

Before installing and starting up the equipment, it is important that you check the box and the state of the equipment in order to verify that it has not suffered any damages during its transportation.

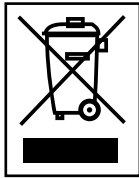
! Attention: Any claim for damages suffered during transportation must be presented to the equipment's distributor together with the packaging slip or invoice, adding the name of the carrier, within 24 hours from receiving the merchandise.

Take out the equipment and accessories from their cardboard packaging, removing the corresponding protections.

! Attention: Make sure to properly dispose of any plastic bags, keeping them out of the reach of children as they can be dangerous for them.

On the inside you will find (depending on the model): The water treatment equipment, installation accessories and its documentation.

The materials used in the packaging are recyclable and must be discarded in the appropriate collection bins or in the local centre designated for the recuperation of waste materials.



This product cannot be discarded together with other urban waste. When the equipment's lifespan comes to an end, it should be handed over to the company or centre where you acquired the device, or in a Recycling Centre or local centre specialised in the recycling of materials, indicating that it has electronic components and refrigerating gases. The proper collection and treatment of the unusable devices contributes to the preservations of natural resources and helps avoid any potential risks to public health.

3. INTRODUCTION

Congratulations. You have acquired one of the best existing equipment for the treatment of water in the market for commercial use in offices and homes.

This equipment will help you improve the characteristics of your water, putting high quality water at your disposal.

Your equipment will offer you various benefits and advantages:

- This is a physical system that does not use nor add chemical products into the water.
- It offers water of high quality.
- It has a low maintenance cost.
- It ensures high production.

4. THE TYPES OF TREATMENT USED BY KINETICO 550

Depending on the KINETICO water dispenser model, are available with different types of treatment: microcarbon and NANOFACIT filtration.

4.1 WHAT IS MICROCARBON?

Microcarbon filtration is the process of separating suspended solids in water through a porous medium, also called a filter. The water goes through the pores of the filter, but the particles that are larger than the pores of the filters are retained by the filters themselves leading to clearer water. KINETICO water dispenser incorporate filters of 5µm.

Microcarbon is used to eliminate any coloration in the water, as well as its flavour, smemll and to eliminate some organic components thanks to its great absorbing abilities.

4.2 WHAT IS NANOFACIT FILTRATION?

Fibre Adsorbent Cellulose Technology, also known as FACT. The FACT® materials is a paper-type compound which consists of fibrillated nano-fibers in combination with different powder adsorbent materials. The resulting structure includes a small pore size combined with a large pore area and extremely fast kinetics for adsorption and reaction. This allows it to retain microorganisms, viruses, bacteria and impurities up to a diameter of 0.2 microns.

5. PRIOR WARNINGS

! Attention: Carefully read and safeguard this manual before installing and starting up the equipment. If you have any doubts regarding the installation, use or maintenance of this equipment, get in touch with the technical assistance service (T.A.S) of your distributor.

! Attention: This equipment does not PRODUCE POTABLE water. If the water to be treated comes from a public source (and therefore conforms to all applicable laws), this equipment will substantially improve the quality of the water. Otherwise, it will be necessary to carry out a physical, chemical and bacteriological analysis of the water to ensure its proper purification by using the appropriate techniques and equipment as needed. This needs to be done BEFORE THE INSTALLATION of the equipment. Get in touch with your distributor so that it can advise you with regards to the appropriate treatment for your situation.

The water treatment equipment requires regular maintenance that needs to be carried out by qualified technical personnel in order to guarantee the quality of water produced and provided.

5.1 CONDITIONS FOR THE CORRECT OPERATION OF THE EQUIPMENT

- The equipment should not be fed with hot water ($T > 40^{\circ}\text{C}$).
- The temperature of the room must be between 4° and 45°C .
- For waters with a salinity level higher than 500 ppm, get in touch with your distributor so that they can advise you for the most appropriate treatment for your case and thus ensure the proper operation of your equipment, avoid damaging the components and guarantee the quality of the water provided.

5.2 PRE-INSTALLATION WARNINGS

- If you need to adapt the facilities of your residence or business in order to be able to install the equipment in the designated space, any adaptation should be done following all applicable national regulations concerning the internal installation of water and power supplies.
- KINETICO equipment requires that a power outlet be placed at least one meter away.
- KINETICO equipment should not be installed laying down or at an angle. They should be placed over a flat surface in order to operate correctly and securely.
- The spot designated for its installation must be large enough to host the device, its accessories, connections and to allow for maintenance to be carried out comfortably.
- Maintain a minimum separation of 10 cm from the sides and back wall to ensure the proper ventilation of the equipment.
- The equipment should never be installed outdoors.

! **ATTENTION:** After its installation, the equipment should not be connected immediately to a power source. It should be left to rest for 2 hours once it has been installed in the desired spot. This is very important in order to guarantee the proper operation of the system, since otherwise the compressor may end up damaged. The manufacturer will not be responsible for any of the damages suffered by the equipment in this case.

5.3. WARNINGS REGARDING THE USE OF THE EQUIPMENT

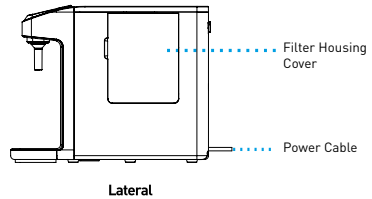
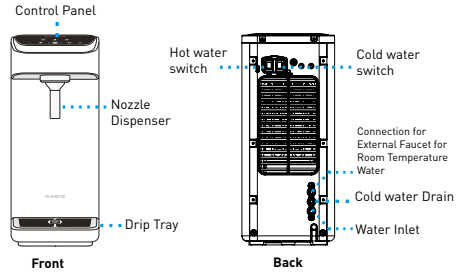
- If you are going to be absent for more than one week, close the equipment's water inlet valve, empty it and disconnect it from the power supply. When you come back, connect the power supply to the equipment, open the inlet valve and empty the storage tank twice before consuming the water.

! **Attention:** If the equipment has not worked or has not produced water for a prolonged period of time (more than one month), get in touch with the distributor in order to set up its appropriate sanitization and maintenance.

! **Attention:** Particular attention must be paid to the regular cleaning and hygiene of the frontal dispensers, especially when carrying out their periodical maintenance and sanitization. For this, use a sanitising spray and single use paper towels (see the chapter on Sanitization).

6. OPERATION OF THE EQUIPMENT

6.1 IDENTIFICATION OF THE PRINCIPAL COMPONENTS

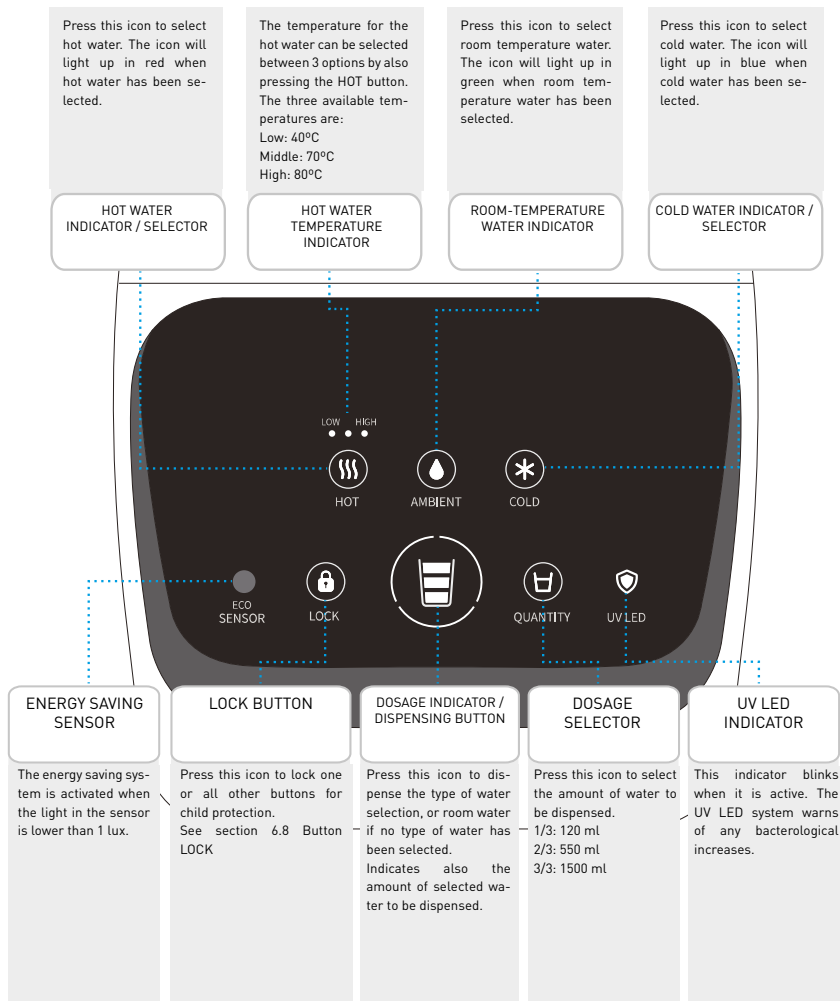


6.2 BASIC OPERATION OF THE SYSTEM

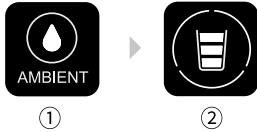
In the "Filtration" models, the network water to be treated goes into the equipment by passing through the sediment filter and the carbon filter. During this step of the filtration process, suspended particles, chloride, their derivatives and other organic substances are retained, and the water then passes through the NANOFACT filter where smaller particles are retained, as well as viruses and bacteria.

When you request water by pressing the upper dispensers of the equipment, the water accumulated in the tank or cold water coil flows to the output nozzles.

6.3 CONTROL PANEL



6.4 HOW TO GET WATER FROM THE EQUIPMENT



GETTING ROOM-TEMPERATURE WATER

1. Press the AMBIENT icon to select the ambient water mode. The dispensing button will light up in green.
2. Press the DISPENSATION icon to dispense ambient water. During the dispensation the circle will blink.

! If a quantity of water has not been selected, 120 ml will be dispensed. Dispensation can be stopped by pressing again the DISPENSATION icon.

GETTING COLD WATER

1. To select cold water, the back COLD switch must be in the ON position. The front COLD icon will turn on.



2. Press the COLD water icon to select the cold water mode. The dispensing button will turn blue.
3. Press the DISPENSATION icon to dispense water. During the dispensation the circle will blink.

! When turned on for the first time, the equipment will require 1 hour of wait to be able to dispense cold water.

! Verify that air inside the cold water deposit has been removed before activating the cold water mode, extracting water by the dispenser by pressing the COLD icon.

GETTING HOT WATER

1. To extract hot water, the back HOT switch must be in the ON position. The frontal HOT will light up.



2. Press the hot water icon. 1/3 cup of the DISPENSATION icon will turn red.
3. Press the DISPENSATION icon. Then, hot water will be dispensed while the circle is flashing after preheating.

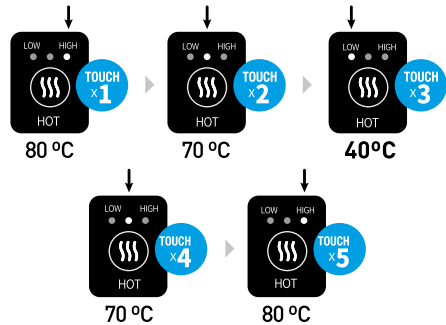
! Initially the hot water function is blocked to prevent damage or malfunction.

! To activate the hot water mode, dispense more than 550 ml in the hot water mode after activating the HOT rear switch.

! As this equipment heats the water with the instant heater system, it takes a few moments (maximum 10 seconds) to start the hot water dispensing. While it is preheating, the three portions of the DISPENSATION icon light up sequentially and when all three flash at the same time, the hot water is dispensed and a "Beep" sounds.

6.5 HOW TO SELECT THE HOT WATER TEMPERATURE

1. Press the HOT icon to select hot water.
2. Press once again the HOT icon when you have selected the hot water mode, change the temperature of hot water sequentially (40°C -> 70°C -> 80°C...)



! If you do not touch the DISPENSATION icon within 5 seconds, the hot water mode is deactivated by returning to the default mode.

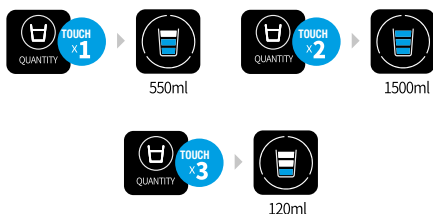
! If you skip step 2. and do not select the hot water temperature, by default water will be dispensed at 80°C.

6.6 HOW TO SELECT THE QUANTITY OF WATER TO BE DISPENSED

PREDETERMINED QUANTITIES



1. Press the QUANTITY icon to select the quantity of water to be dispensed (1 press -> 550 ml, 2 presses -> 1500 ml, 3 presses -> 120 ml) and then press the icon DISPENSATION.



! If you do not select a quantity of water, by default, 120 ml will be dispensed.

FREE QUANTITY

1. Touch and hold the DISPENSATION icon. While holding down the DISPENSATION icon, water will be drawn. When you lift your finger from the icon, the dispensing will cease (except in hot water mode).

! The quantity of water dispensed may vary depending on the inlet pressure.

! During dispensation, this can be stopped by pressing the DISPENSATION icon.

! In the hot water mode, if the quantity of water is not selected, 120 ml will be dispensed.

6.7 ENERGY SAVING MODE

This system lowers its consumption of electricity when, intelligently, it disconnects the cooling system when it detects darkness, as during the evening, through the integrated light sensor.

ACTIVATE

Press and keep pressed for more than 4 seconds the QUANTITY ICON. The blue DISPENSATION icon will blink 3 times with a sound (ding-dong) indicating that it has been activated correctly.



DEACTIVATE



Press and keep pressed for more than 4 seconds the QUANTITY ICON. The white DISPENSATION icon will blink 3 times with a sound (ding-dong) indicating that it has been deactivated correctly.

! Regardless of whether saving mode is activated, when the light sensor detects darkness, the brightness of the control panel icons will decrease to prevent glare.

6.8 BUTTON BLOCKING

Avoid damage to children or accidents due to carelessness.

ACTIVATE / DEACTIVATE THE LOCKING OF ALL BUTTONS

The locking of all buttons is activated by touching the LOCK icon for more than 5 seconds. This lights up indicating that it has been activated correctly.



The lock is deactivated by touching the LOCK icon for more than 5 seconds. It turns off indicating that it has been deactivated correctly.

LOCKING INDIVIDUAL BUTTONS

Press any icon that you wish to lock (HOT/AMBIENT/COLD) together with the LOCK icon for more than 5 seconds.

Unlock the blinking icon together with the LOCK icon for more than 5 seconds.

Example locking the hot water icon



! If you touch a locked icon, it flashes and a sound sounds.

! If you lock all icons when an individual lock was activated, all icons will be locked. If you subsequently unlock all the icons, you will return to the previous individual lock mode.

! The locks are initialized when disconnecting and connecting to the power supply.

6.9 ACTIVATE / DEACTIVATE SOUNDS

To activate the sounds, touch the LOCK and QUANTITY icons for more than 4 seconds. The portion of the DISPENSATION icon at the top right will flash 3 times accompanied by a 'ring' indicating that it has been activated correctly.



To deactivate the sounds, touch the LOCK and QUANTITY icon for more than 4 seconds. The portion of the DISPENSATION icons below will flash 3 times accompanied by a 'ring' indicating that it has been deactivated correctly.



6.10 CHANGE OF DEFAULT WATER TYPE

You can change the type of water that is dispensed by default if you do not select any type of water, which by default is factory water.

CHANGE FROM ROOM TEMP. TO COLD TEMP.

Press the COLD cold water icon for more than 5 seconds. The DISPENSATION icon will light blue, indicating that cold water has been programmed as the default water type.



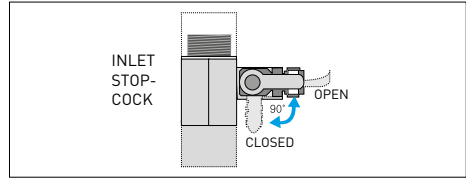
CHANGE FROM COLD TEMP. TO ROOM TEMP.

Touch the AMBIENT room temp. water icon for more than 5 seconds. The DISPENSATION icon will turn green, indicating that you have programmed room water as the default water type.



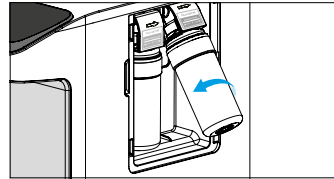
7. HOW TO ACCESS THE FILTERS

Before changing the filters, close the inlet stopcock and depressurize the circuit by touching the DISPENSATION icon. Unplug the equipment from the power supply.

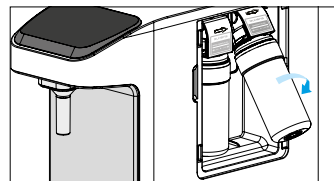


Remove the side cover of the equipment to access the filters.

Pull the filter you want to pull out slightly by the base and then, hold it firmly with one hand and turn it a quarter turn to the left to remove it.



Remove the protections from the new filter and insert it into the head by turning a quarter turn clockwise.



8. TECHNICAL CHARACTERISTICS

Application

Water Treatment

- NANOFACT Filtration

Use

- Improves the characteristics of potable water (that complies with the requirements of the EU directive on Water intended for human consumption 98/83 or its national transpositions on the various member states of the European Community).

Modification for reduction or intake

- The treatment of water through filtration retains all suspended particles that have a diameter larger than 5 microns.
- The carbon filter NANOFACT reduces the flavour and smell of the water as well as its organic components. It retains microorganisms, as well as viruses and bacteria.

(*) Based on the characteristics of the water to be treated.

Operational Limits

Pressure (máx. / mín.) 3 bar (300 kPa) 1 bar (100 kPa)

Temperature (máx. / mín.) 40°C - 2°C

Technical Data

Control Type: Cold water thermostat.

Inlet connection: 1/4"

Drainage Connection: 1/4"

Wall adapter: 1/2"

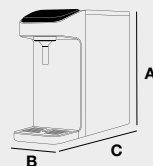
Drain saddle: -

Treatment: 1 Sediment Prefilter
1 NANOFACT Carbon Prefilter

Filter connections

Inlet: bayonet

Outlet: 1/4" spike



Dimensions: 407 x 180 x 514 (A x B x C)

Weight: 13,5 Kg

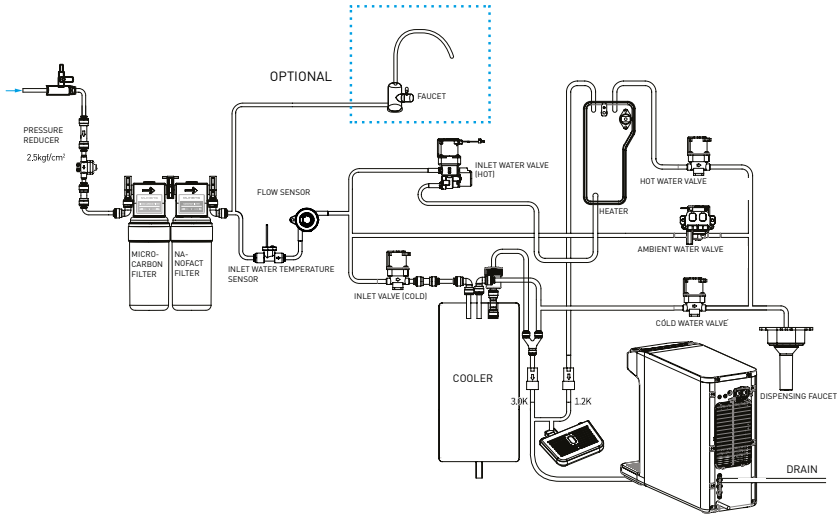
Power Supply: 230 - 240 VAC 50 Hz

Total Tank Volume Cold water 0,9 l.

REFRIGERATION SYSTEM

Compressor:	Sealed
Compressors' Power:	90 W
Refrigerating gas:	R134A
Temperature control:	Capillary thermostat

Esquema hidráulico



9. INSTALLATION

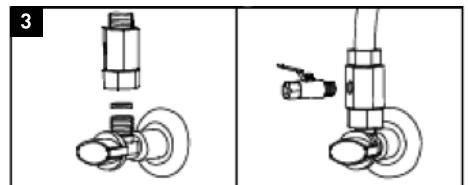
The installation of your KINETICO FC550 must be done by personnel that is sufficiently qualified for this purpose. Get in touch with your distributor in case of doubt.

! Attention: Since the device that will be installed improves the quality of water for consumption, all the tools that will be used for its assembly and installation must be clean and under no circumstances may they be contaminated or imbued with grease, oils or oxides. Use tools that will be used exclusively for cutting of the tubes, etc.

! Attention: The installation work must be carried out following the appropriate regulations and sanitization, taking extreme precautions with all materials and components that will be directly in contact with the water to be treated or consumed.

! Attention: Use gloves, hand sanitizing gel or wash your hands as many times as necessary throughout the installation, commissioning and maintenance of the equipment in order to avoid the risk of contaminating the equipment by not handling it properly.

Install the adapter from the input socket (3) and connect the 1/4" power tube from the stopcock to the IN (input) equipment connector, located on the back-bottom of the equipment. Use the appropriate tools and sealants to ensure the tightness of the connections. Before connecting the equipment to the power supply, make sure that the equipment has been at least 2 hours idle to avoid damage to the cooling system.



It is necessary to remove the dust from the granulated carbon from the filters generated during the transport and handling of the equipment and corresponding cartridges. Feed the equipment hydraulically (by opening the stopcock) until the water is clear and the coal dust has been completely removed by the nozzle of the dispenser (see Chapter 6.4 GET WATER FROM THE EQUIPMENT)

10. CLEANING AND MAINTENANCE

10.1 CLEANING THE EQUIPMENT

- Always unplug the equipment from its power supply before cleaning it.
- Clean the exterior surfaces of the equipment with a cloth dampened with water and neutral soap.
- Never use detergent or chemicals.
- Do not spray water directly onto the surface of the equipment.
- If the capacitor accumulates dust or other unknown substances, clean it with a cloth dampened with water and neutral soap.
- After cleaning the equipment, dry it completely before plugging it into the power supply.

10.2 MAINTENANCE OF THE WATER TREATMENT

! Attention: Some components of your equipment, such as prefilters are consumption items that have a limited lifespan. The lifespan will depend on the local water quality, consumption, type of use and specific aspects of the water to be treated such as extreme turbidity, high chlorination.

! Attention: In order to guarantee the quality of the water supplied by your equipment, you should perform periodic maintenance.

Recommended Maintenance
Sediment Prefilter: At least every 6 months*
NANOFACT Carbon Prefilter: At least every 12 months*
Sanitization: On start-up. At least every 12 months depending on their use. Each time components of the equipment that are direct in contact with water are accessed or no water has been consumed for more than one month.

* Depending on the intended use and characteristics of the water to be treated.

Maintenance must be performed by trained personnel, who must handle the equipment properly and use original spare parts to preserve the characteristics, warranty, certifications and performance of the equipment and thus preserve the quality of the water dispensed.

! Attention: The use of non-original spare parts, installation outside operating limits and improper start-up, maintenance or use, may lead to the loss of the warranty, as well as to the invalidation of equipment's certifications.

If a compound is present in an excessive amount (total chlorine, turbidity, hardness, etc.), it can reduce the lifespan of the filters and certain components. These maintenance periods are indicative.

! Attention: All consumables items are delivered in individual packaging specially designed to guarantee hygienic storage and transport conditions. Extreme hygienic precautions must be ensured after the consumable items are removed from their packaging and during the handling of the different connectors and components.

! Attention: Before disassembling the equipment, plan all the material that you will need to carry out the maintenance operations and the space necessary for it. Work in a properly lit place, in adequate hygienic conditions and with enough space to perform the operations comfortably.

Change the filters in the appropriate manner, depending on the model of the equipment and the type of filter. Ensure the tightness of the joints and the original hydraulic configuration of the system. Check the technical characteristics, the filters needed according to your equipment model and how to access these filters.

Sanitize the equipment following the instructions described in the Sanitization Procedure.

! Attention: If you detect that the dispensed water does not comply with the national legislation in force, close the equipment's inlet valve, empty it through the tap, disconnect it electrically and contact your technical service.

11. SANITIZATION PROCEDURE

Necessary items:

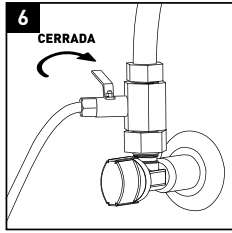
- Manual valve.
- Measuring cup with connectors.
- Sanitizing cleaner for water treatment equipment.
- Single use Vinyl gloves.
- Hydrogen peroxide detector strips.
- Sanitizing spray.
- Paper towels.

Sanitize the equipment during its set-up, when appropriate (whenever there is a risk of the equipment being contaminated by the handling of components in contact with water) or according to the indicated maintenance intervals.

To do this, follow the steps below:

! Attention: The water used during sanitization must be potable water (from a public distribution network that complies with the corresponding potable water requirements as per RD 140/2003, European directive 98/83 or current local legislation).

- Keep the inlet valve closed (6) and depressurize the reservoir or coil by pressing the DISPENSATION icon.
- Sanitization must be carried out with the installation of new prefilters and postfilters that have rinsed appropriately, properly removing any carbon dust from them.
- Use single-use vinyl gloves to handle sanitizing products.



- Place the measuring cup in the equipment's inlet tube.

How to proceed:

- Disconnect the equipment's inlet tube marked "IN", and insert the measuring cup between the shut-off valve and the equipment's water inlet (8). For greater comfort and ease of access during the sanitization and the opening and closing of the inlet valve, if the shut-off valve is inaccessible or too far from the equipment, a manual valve in closed position, which will perform the same function as the shut-off valve at the entrance of the equipment, can be inserted together with the sanitizing measuring cup.

- Once everything is installed, keep the new inlet valve closed and open the inlet shut-off valve (9). The measuring cup should initially be empty.

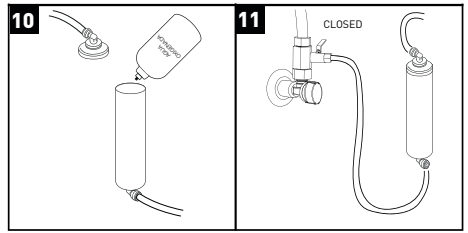
- Pour 100 ml of Sanitizing Product into the measuring cup interspersed in the equipment inlet (10). Screw the cup correctly at its top.

- The inlet manual valve must be closed. Connect the equipment to its power supply.

- Open the water inlet shut-off valve to the equipment, enabling it to start up and allowing the sanitizing product to go through. Keep the inlet valve in that position and extract a cup of water for each dispenser in order to fill all the hydraulic circuit with sanitising product.

- Close the inlet stopcock (11) and let the soaked filters rest with the sanitizing solution for 20 minutes. Meanwhile proceed to sanitize dispensers using sanitizing spray and paper napkins.

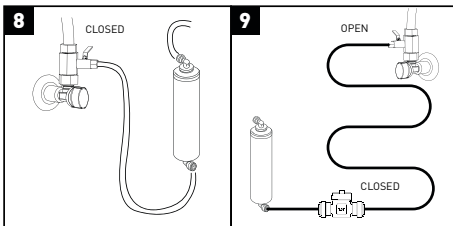
- Depressurize the circuit by opening the faucet. Empty the measuring cup. Before opening it, have a container within your reach where you can empty it, as it may be full of water.



- Remove the complementary elements used for Sanitation and reconnect the supply tube to the inlet (IN) of the equipment.

- Open the shut-off valve and extract 5 litres of water for each dispenser in order to soak the equipment with the sanitising product.

- Use the sanitizing product detection strips to verify that the equipment is properly rinsed, empty it if you detect traces of sanitizing product.



12. TROUBLESHOOTING

Problem	Reason	Solution
No water enters the source	The shut-off valve is closed	Open the shut-off valve
	There is no water supply	Problem outside the source
	Obstruction in the source feed tube.	Change the feeding tube
Production is low	Partial obstruction of the sediment filter, comparing the inlet flow with the output of the sediment cartridge.	Change the sediment filter
	The TDS of the inlet water is higher than 1500 ppm	Get in touch with technic support
The water tastes bad	The water does not comply with the current legislation	Install the equipment to drinking water that complies with current legislation
	The source is contaminated	Carry out a full sanitization of the source
There is no cold water	The rear switch (COLD) is in the OFF position	Place the thermostat in a position other than OFF.
	The customer fills up bottles of cold water and empties the cold-water tank	The fountains are designed for water to be drawn from glass to glass
	The cold system is damaged or the refrigerant gas has been lost.	Contact Technical Support

13. WARRANTY

The distributor guarantees the equipment for a period of two years in the event of any non-compliance detected in the equipment, in accordance with Royal Decree 1/2007 of 16 November (revised text of the General Law for the Defence of Consumers and Users).

- The guarantee includes the repair and replacement of faulty parts by personnel authorised by the distributor or by the official technical assistance service (T.A.S) at the place of installation or in its workshops. Included in the warranty is labor and shipping costs that may be generated.
- The distributor is exonerated from providing a guarantee in the case of parts subject to natural wear, lack of maintenance, blows or other nonconformities resulting from improper use of the equipment or inadequate according to the conditions and operating limits indicated by the manufacturer of the same. Likewise, the warranty becomes ineffective in cases of improper handling and use of the equipment or in those cases in which they have been modified or repaired by personnel outside the distribution company or official T.A.S.
- The parts replaced under warranty will remain the property of the distributor.
- The distributor is responsible for the lack of conformity of the equipment when it refers to the origin, identity or suitability of the products, according to their nature and purpose. Bearing in mind the characteristics of the equipment it is essential for the warranty to cover the lack of conformity, the fulfillment of the technical conditions of installation and operation. Failure to comply with these conditions may result in the absence of a warranty, taking into account the relevance of the destination of the equipment and the conditions and operating limits in which it must operate.
- The distributor must ensure that the installed equipment is suitable for improving the quality of the water to be treated in particular, according to the characteristics of the equipment and the regulations in force.
- The distributor must ensure the correct installation and start-up of the equipment as indicated by the manufacturer and current regulations and will also be liable for any lack of conformity resulting from incorrect application, installation or start-up of the equipment.
- For any warranty claim it is necessary to present the purchase invoice. The period of two years is calculated from the purchase of the equipment from the distributor.
- If there is a problem with your equipment during the warranty period, please contact your dealer.

The equipment is installed and operating to the customer's satisfaction and for the record:

- * Pre-treatment of the equipment:
- * Hardness of entry to the equipment
- * TDS input to the equipment (ppm):
- * TDS produced water (ppm):
- * Pressure of entry to the equipment (t
- *Result of the installation and commissioning sheet:
Correct:
Others:

The owner of the equipment has been properly and clearly informed of the use, handling and maintenance that the equipment requires to ensure its proper functioning and the quality of the water produced. A maintenance contract is offered for this purpose.

*Ref: Maintenance contract:

ACCEPTS the maintenance contract

DOES NOT ACCEPT the maintenance contract

If you need information, report a malfunction or malfunction, request for maintenance or intervention by a technician, please read the operation, troubleshooting and troubleshooting sections of this manual beforehand and contact the distributor or company that sold you your equipment.

COMPANY AND/OR AUTHORIZED INSTALLER, DATE AND SIGNATURE:

SERIAL NUMBER:



NOTE TO THE COMPANY AND/OR AUTHORIZED TECHNICIAN/INSTALLER: the data marked with the * symbol must be filled in by the installer and transcribed by him/herself from the INSTALLATION REGISTRATION sheet.



14. INSTALLATION REGISTER SHEET



NOTES TO THE TECHNICIAN/INSTALLER: read this manual carefully. If in doubt, contact your dealer's Technical Support Service (T.A.S.). The data marked with the symbol * must be filled in by the technician/installer and transcribed by him/herself to the WARRANTY page. This sheet must be kept by the installer and may be requested by the distributor in order to improve after-sales service and customer service. The technician who performs the installation and commissioning of the equipment must have adequate technical training.

INFORMATION ON THE USE OF THE EQUIPMENT:

Origin of the water to be treated:

PUBLIC SUPPLY NETWORK

OTHER

* Pre-treatment of the equipment:

* Hardness of entry to the equipment (°F):

* TDS of entry to the equipment (ppm):

* TDS produced water (ppm):

Inlet pressure to the equipment (bar):

INSTALLATION STEP CONTROL:

Pre-filter assembly:

Overflow installation:

Start-up according to protocol:

Checking of fittings:

Measurement of inlet hardness:

Output hardness measurement:

Installation of isolation by-pass:

Correct drainage installation:

Brine suction test/tank filling:

Leakage of the pressurised system:

Programming of the equipment:

Adjustment of residual hardness:

COMMENTS

* Result of installation and commissioning:

CORRECT (equipment installed and working correctly. Produced water suitable for the application).

OTHER:

IDENTIFICATION OF THE AUTHORISED TECHNICIAN/INSTALLER: CONFORMITY OF THE OWNER OF THE EQUIPMENT:

COMPANY AND/OR AUTHORIZED INSTALLER, DATE AND SIGNATURE:

I have been clearly informed of the use, operation and maintenance required by the installed equipment, having been offered a maintenance contract and informed of how to contact a customer service in the event of a request for information, communication of a breakdown or malfunction, request for maintenance or intervention by a technician.

Remarks:

*Ref: Maintenance contract:

ACCEPTS the maintenance contract

SERIAL NUMBER

DOES NOT ACCEPT the maintenance contract

Model/Ref:

Owner:

Street

Telephone:

City:

Province:

C.P.:

EQUIPMENT WARRANTY DIRECTED TO THE DISTRIBUTOR:

The distributor will only be responsible for the replacement of parts in the event of non-conformity. The repair of the equipment and the costs involved (labour, shipping costs, travel, etc.) will be borne by the distributor, in accordance with the general conditions of contract and sale, so it can not be passed on later to the manufacturer.



15. MAINTENANCE SERVICE

DATE	SERVICE TYPE	NAME, SIGNATURE AND STAMP OF THE AUTHORISED TECHNICIAN	
<input type="text"/>	<input type="radio"/> SETTING UP		
<input type="text"/>	<input type="radio"/> FULL MAINTENANCE	TECHNICIAN <input type="text"/>	
<input type="text"/>	<input type="radio"/> PREPARATION	STAMP	<input type="radio"/> ORDINARY
<input type="text"/>	<input type="radio"/> HYGIENISATION	<input type="text"/>	<input type="radio"/> OUTSTANDING.
<input type="text"/>	<input type="radio"/> OTHER		<input type="radio"/> WARRANTY
<input type="text"/>	<input type="radio"/> FULL MAINTENANCE	TECHNICIAN <input type="text"/>	
<input type="text"/>	<input type="radio"/> PREPARATION	STAMP	<input type="radio"/> ORDINARY
<input type="text"/>	<input type="radio"/> HYGIENISATION	<input type="text"/>	<input type="radio"/> OUTSTANDING.
<input type="text"/>	<input type="radio"/> OTHER		<input type="radio"/> WARRANTY
<input type="text"/>	<input type="radio"/> FULL MAINTENANCE	TECHNICIAN <input type="text"/>	
<input type="text"/>	<input type="radio"/> PREPARATION	STAMP	<input type="radio"/> ORDINARY
<input type="text"/>	<input type="radio"/> HYGIENISATION	<input type="text"/>	<input type="radio"/> OUTSTANDING.
<input type="text"/>	<input type="radio"/> OTHER		<input type="radio"/> WARRANTY
<input type="text"/>	<input type="radio"/> FULL MAINTENANCE	TECHNICIAN <input type="text"/>	
<input type="text"/>	<input type="radio"/> PREPARATION	STAMP	<input type="radio"/> ORDINARIA
<input type="text"/>	<input type="radio"/> HYGIENISATION	<input type="text"/>	<input type="radio"/> EXTRAORDINARIA
<input type="text"/>	<input type="radio"/> OTHER		<input type="radio"/> GARANTÍA
<input type="text"/>	<input type="radio"/> FULL MAINTENANCE	TECHNICIAN <input type="text"/>	
<input type="text"/>	<input type="radio"/> PREPARATION	STAMP	<input type="radio"/> ORDINARY
<input type="text"/>	<input type="radio"/> HYGIENISATION	<input type="text"/>	<input type="radio"/> OUTSTANDING.
<input type="text"/>	<input type="radio"/> OTHER		<input type="radio"/> WARRANTY

15. MAINTENANCE SERVICE

DATE	SERVICE TYPE	NAME, SIGNATURE AND STAMP OF THE AUTHORISED TECHNICIAN	
<input type="text"/>	<input type="radio"/> SETTING UP		
<input type="text"/>	<input type="radio"/> FULL MAINTENANCE	TECHNICIAN	<input type="radio"/> ORDINARY <input type="radio"/> OUTSTANDING. <input type="radio"/> WARRANTY
<input type="text"/>	<input type="radio"/> PREPARATION	STAMP	
<input type="text"/>	<input type="radio"/> HYGIENISATION	<input type="text"/>	
<input type="text"/>	<input type="radio"/> OTHER		
<input type="text"/>			
<input type="text"/>	<input type="radio"/> FULL MAINTENANCE	TECHNICIAN	<input type="radio"/> ORDINARY <input type="radio"/> OUTSTANDING. <input type="radio"/> WARRANTY
<input type="text"/>	<input type="radio"/> PREPARATION	STAMP	
<input type="text"/>	<input type="radio"/> HYGIENISATION	<input type="text"/>	
<input type="text"/>	<input type="radio"/> OTHER		
<input type="text"/>			
<input type="text"/>	<input type="radio"/> FULL MAINTENANCE	TECHNICIAN	<input type="radio"/> ORDINARY <input type="radio"/> OUTSTANDING. <input type="radio"/> WARRANTY
<input type="text"/>	<input type="radio"/> PREPARATION	STAMP	
<input type="text"/>	<input type="radio"/> HYGIENISATION	<input type="text"/>	
<input type="text"/>	<input type="radio"/> OTHER		
<input type="text"/>			
<input type="text"/>	<input type="radio"/> FULL MAINTENANCE	TECHNICIAN	<input type="radio"/> ORDINARY <input type="radio"/> OUTSTANDING. <input type="radio"/> WARRANTY
<input type="text"/>	<input type="radio"/> PREPARATION	STAMP	
<input type="text"/>	<input type="radio"/> HYGIENISATION	<input type="text"/>	
<input type="text"/>	<input type="radio"/> OTHER		
<input type="text"/>			
<input type="text"/>	<input type="radio"/> FULL MAINTENANCE	TECHNICIAN	<input type="radio"/> ORDINARY <input type="radio"/> OUTSTANDING. <input type="radio"/> WARRANTY
<input type="text"/>	<input type="radio"/> PREPARATION	STAMP	
<input type="text"/>	<input type="radio"/> HYGIENISATION	<input type="text"/>	
<input type="text"/>	<input type="radio"/> OTHER		
<input type="text"/>			

MU